

METAL SERIES

ME'DECOR



WPC wall panel

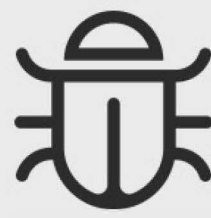
ME'DECOR

WPC uses polyethylene, polypropylene, and polyvinyl chloride instead of commonly used resin adhesives to mix with more than 50% of waste plant fibers such as wood powder, rice husk, and straw to form new wood materials.

Then, it produces boards or profiles through plastic processing processes such as extrusion, molding, and injection molding.



Waterproof



Insect prevention

E0

Environmental protection

B1

Flame-retardant



Thickness: 5mm&8mm



Bending and shaping



Waterproof and moisture-proof

PRODUCTS

LENGTH AND WIDTH: 1120*2800(mm)

THICKNESS: 5mm&8mm

ENVIRONMENTAL PROTECTION GRADE: ENF

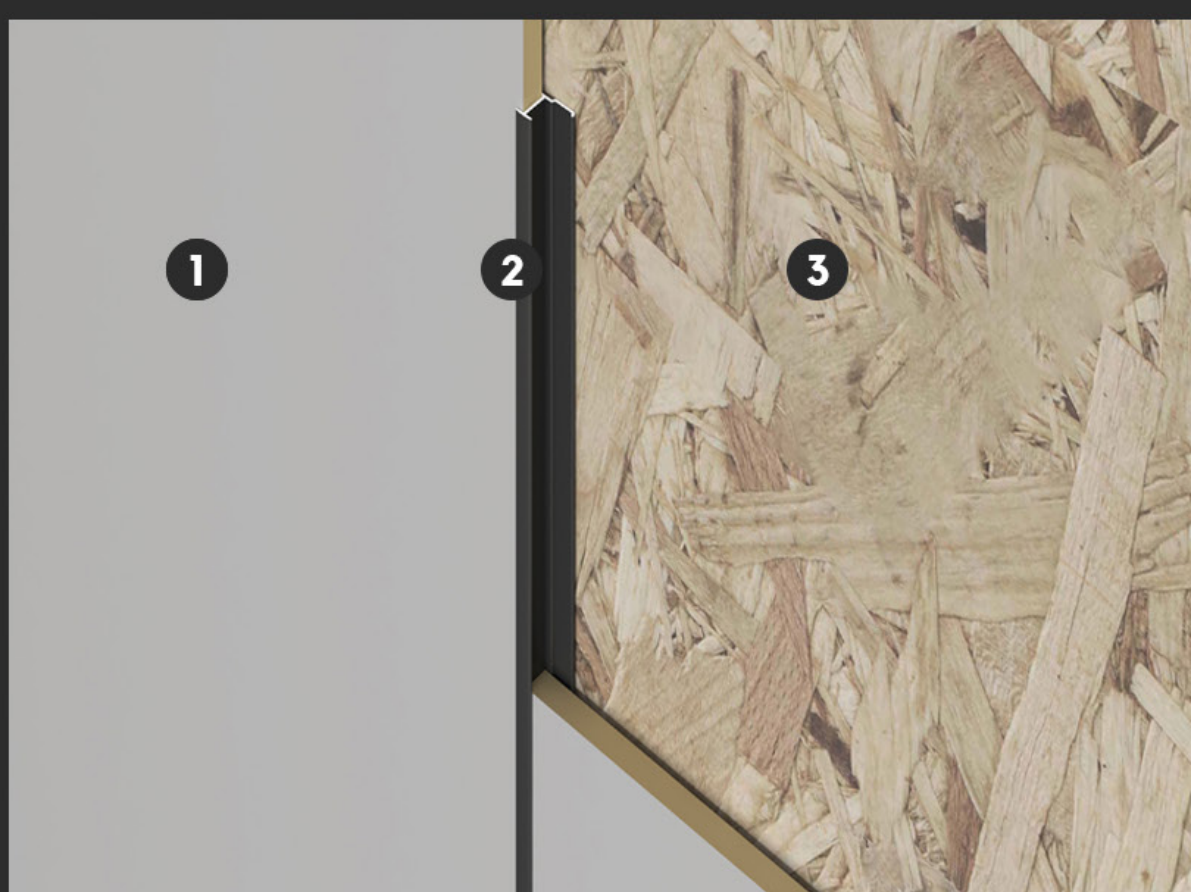
FIRE RATING: B1

PERFORMANCE: waterproof&bendable

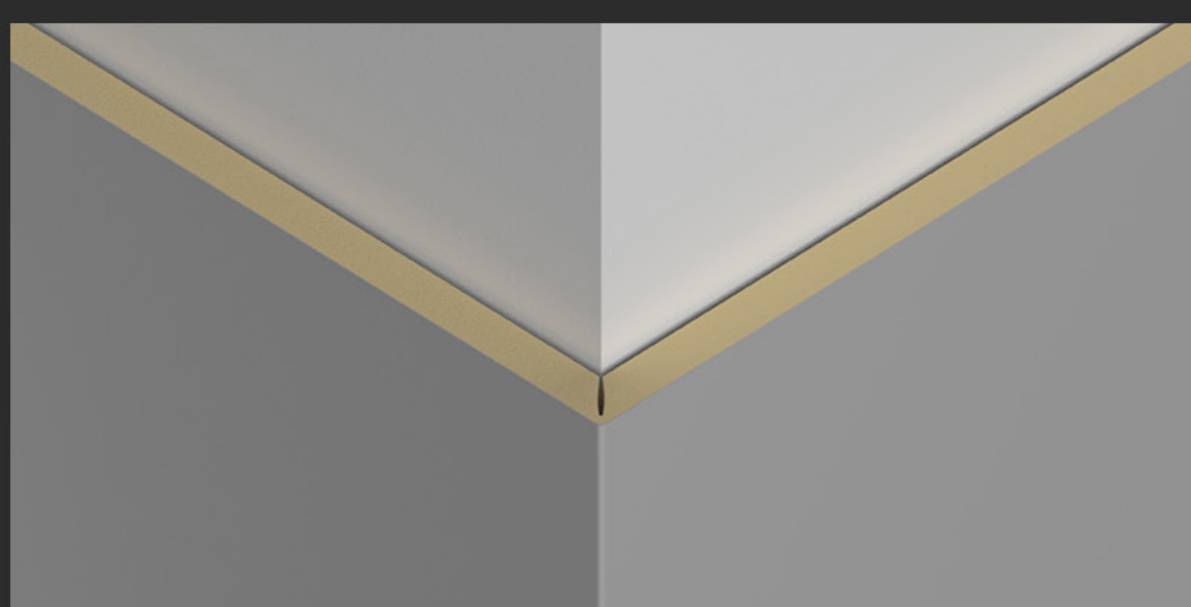
▼ INSTALL



- 1&4. Puttying and leveling
2. Apply structural adhesive on the back
3. Metal profile connection
5. Rough wall

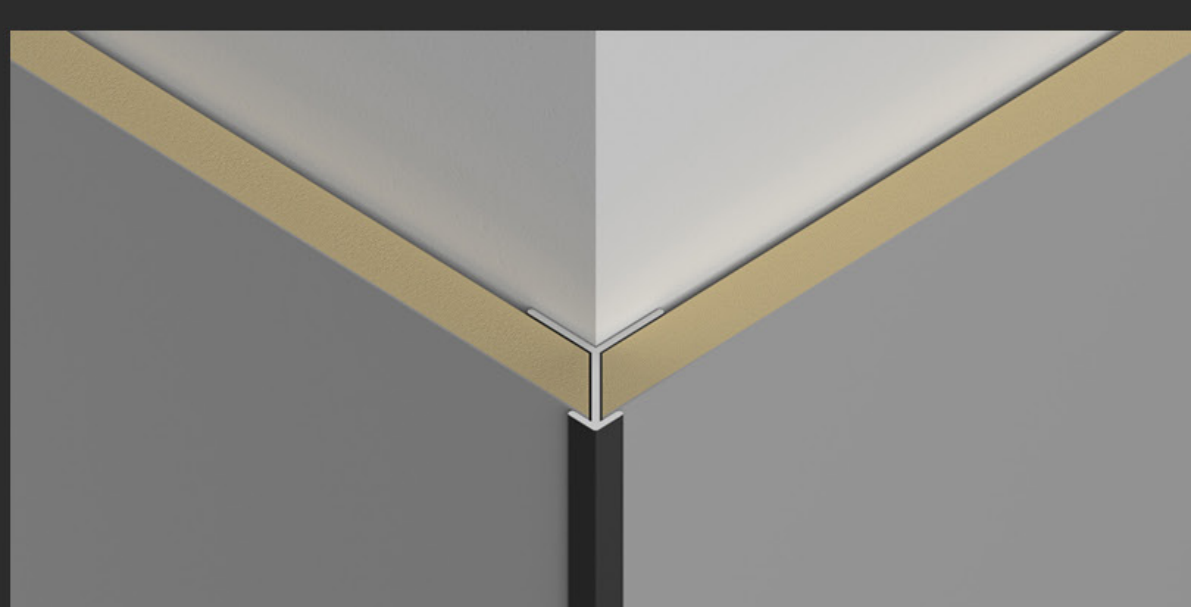


1. Apply structural adhesive on the back
2. Metal profile connection
3. Puttying and leveling



CORNER SLOTTING AND BENDING

1. Slotting of trimming machine
2. Hot air gun heating bending
3. Apply structural adhesive on the back of the wall panel



Apply structural adhesive on the back

METAL SERIES CASE ▼

METAL SERIES

BJX704 #

#

WPC WALL PANEL



METAL SERIES BZX704

NAME: WPC wall panel

MATERIAL: Nanofiber powder

LENGTH AND WIDTH: 1120*2800(mm)

THICKNESS: 5mm&8mm

ENVIRONMENTAL PROTECTION GRADE: ENF

FIRE RATING: B1

PERFORMANCE: waterproof&bendable

METAL SERIES
BJX704

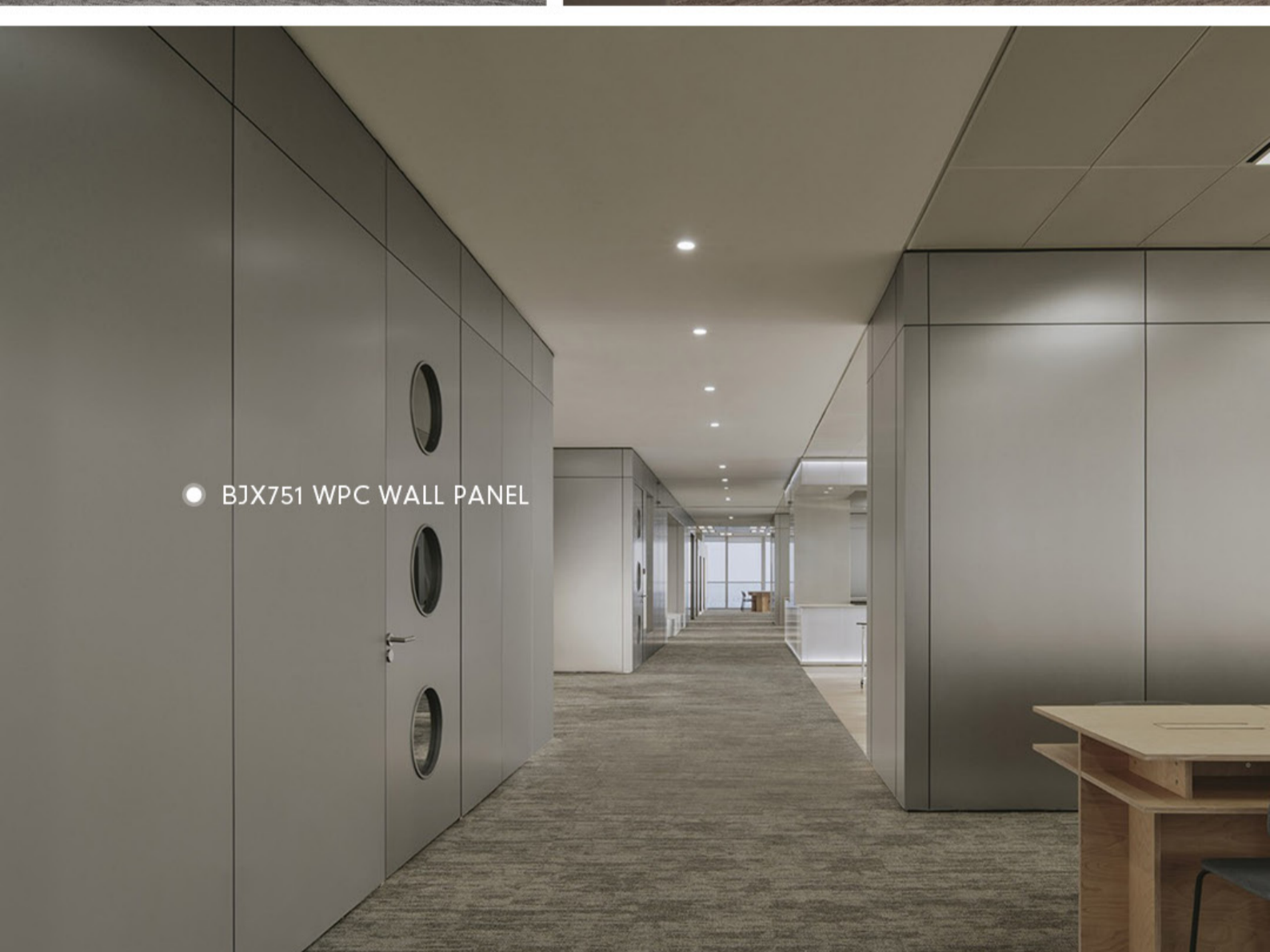
WPC WALL PANEL

#

METAL SERIES

BJX751

WPC WALL PANEL



METAL SERIES BJX751

NAME: WPC wall panel

MATERIAL: Nanofiber powder

LENGTH AND WIDTH: 1120*2800(mm)

THICKNESS: 5mm&8mm

ENVIRONMENTAL PROTECTION GRADE: ENF

FIRE RATING: B1

PERFORMANCE: waterproof&bendable

METAL SERIES
BJX751

WPC WALL PANEL

#

METAL SERIES

BJX712

WPC WALL PANEL



METAL SERIES BJBX712

NAME: WPC wall panel

MATERIAL: Nanofiber powder

LENGTH AND WIDTH: 1120*2800(mm)

THICKNESS: 5mm&8mm

ENVIRONMENTAL PROTECTION GRADE: ENF

FIRE RATING: B1

PERFORMANCE: waterproof&bendable

METAL SERIES
BJBX712

WPC WALL PANEL

#

METAL SERIES
BJX701

WPC WALL PANEL



METAL SERIES BJBX701

NAME: WPC wall panel

MATERIAL: Nanofiber powder

LENGTH AND WIDTH: 1120*2800(mm)

THICKNESS: 5mm&8mm

ENVIRONMENTAL PROTECTION GRADE: ENF

FIRE RATING: B1

PERFORMANCE: waterproof&bendable

METAL SERIES
BJX701

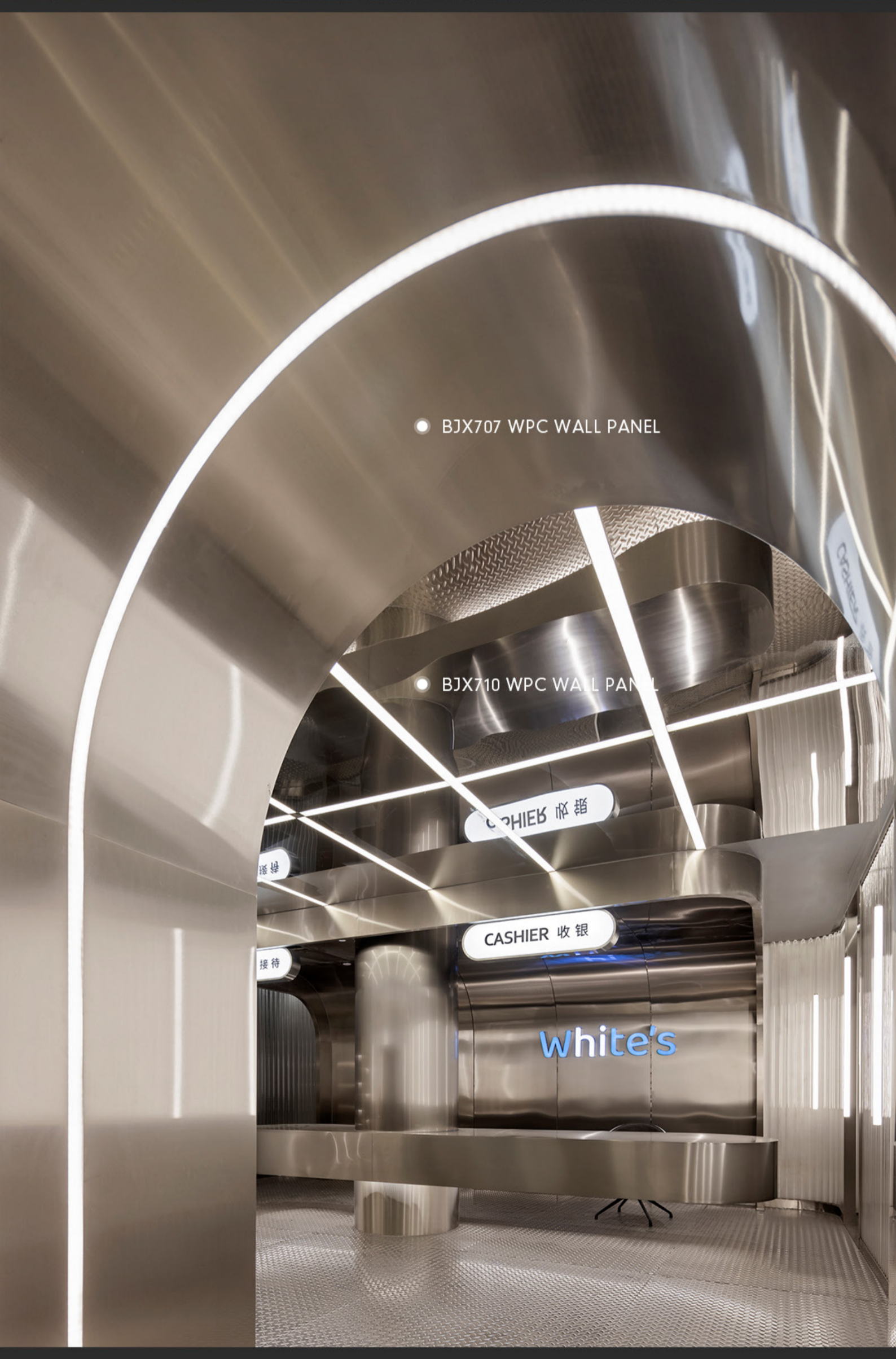
WPC WALL PANEL

#

METAL SERIES

BJX710+BJX707

WPC WALL PANEL



METAL SERIES BZX710 + BZX707

NAME: WPC wall panel

MATERIAL: Nanofiber powder

LENGTH AND WIDTH: 1120*2800(mm)

THICKNESS: 5mm&8mm

ENVIRONMENTAL PROTECTION GRADE: ENF

FIRE RATING: B1

PERFORMANCE: waterproof&bendable

METAL SERIES
BZX710+BZX707

WPC WALL PANEL

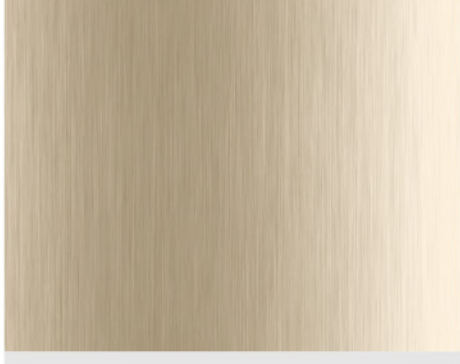
▼ COLOUR



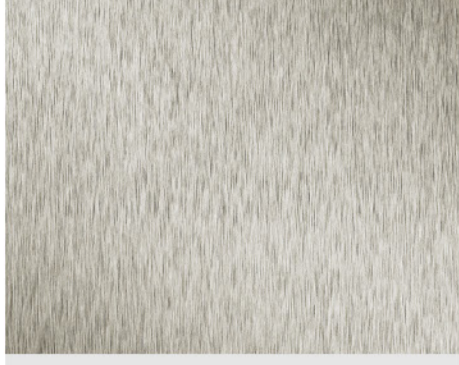
BJB311



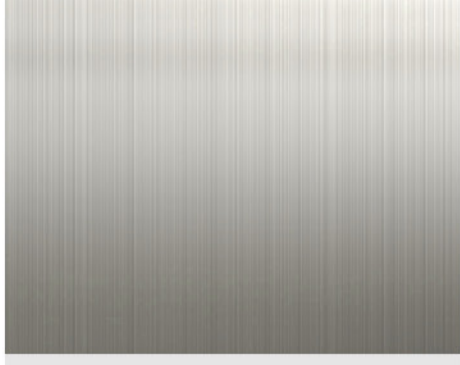
BJB312



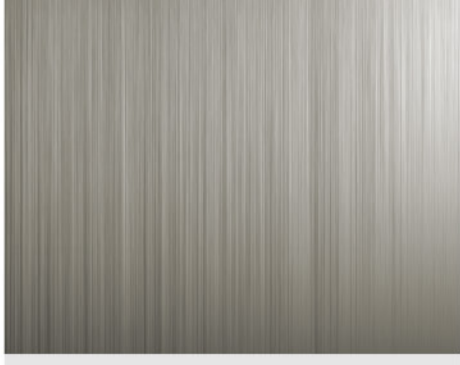
BJB701



BJB702



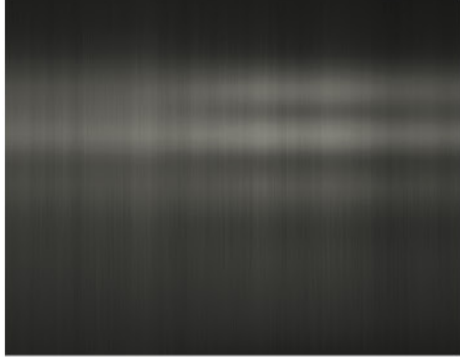
BJB703



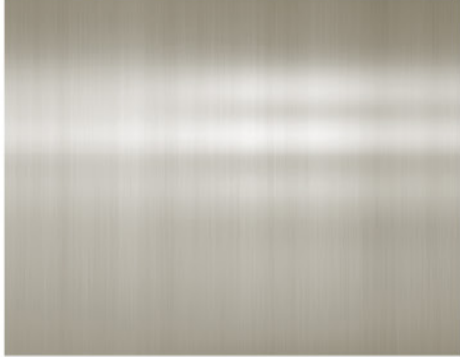
BJB704



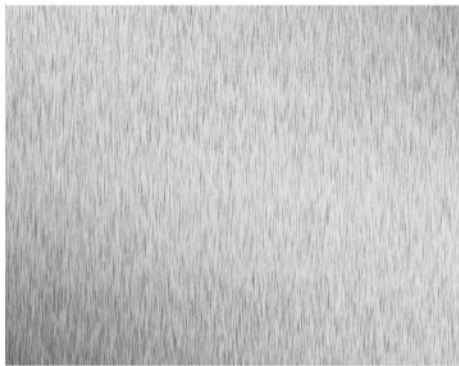
BJB705



BJB706



BJB707



BJB708



BJB710



BJB711



BJB712



BJB713



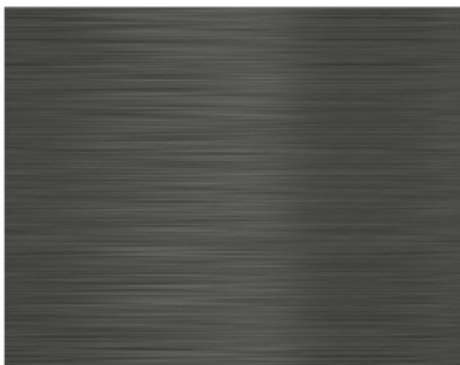
BJB715



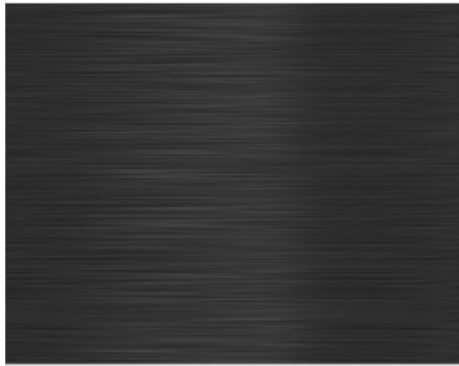
BJB721



BJB722



BJB723



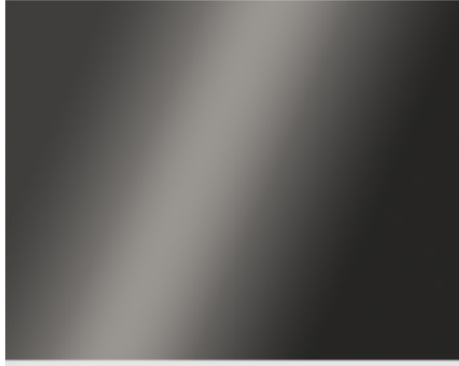
BJB724



BJB751



BJB752



BJB753



BJB754



BJB756



BJB761



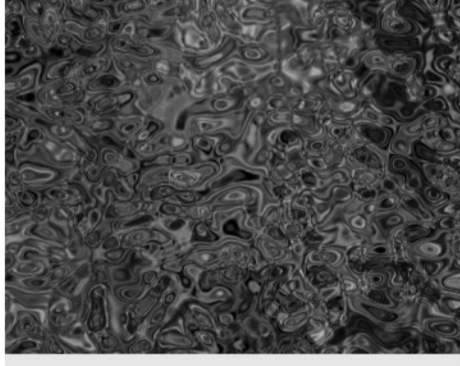
BJB762



BJB763



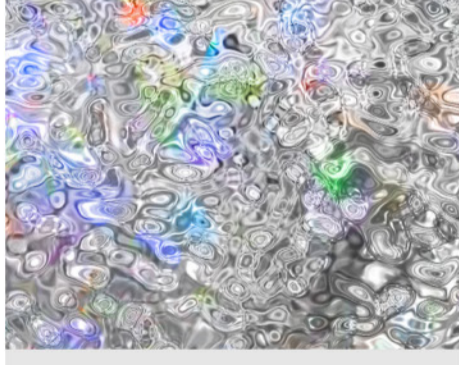
BJB901



BJB902



BJB903



BJB905



BJB910



BJB911



BJB912



BJB913



BJB915



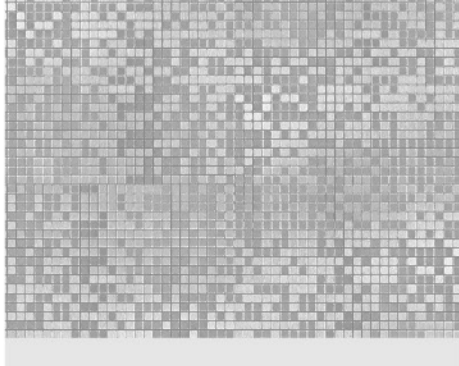
BJB916



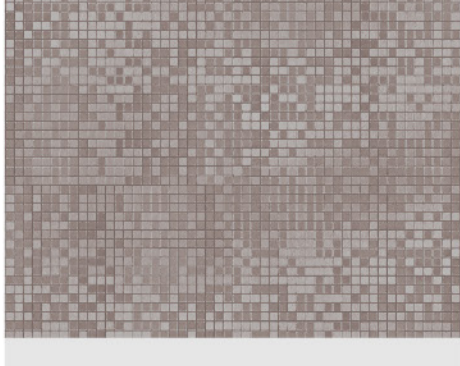
BJB917



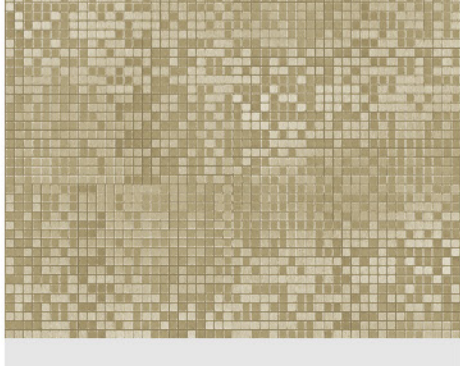
BJB918



BJB951



BJB952



BJB953